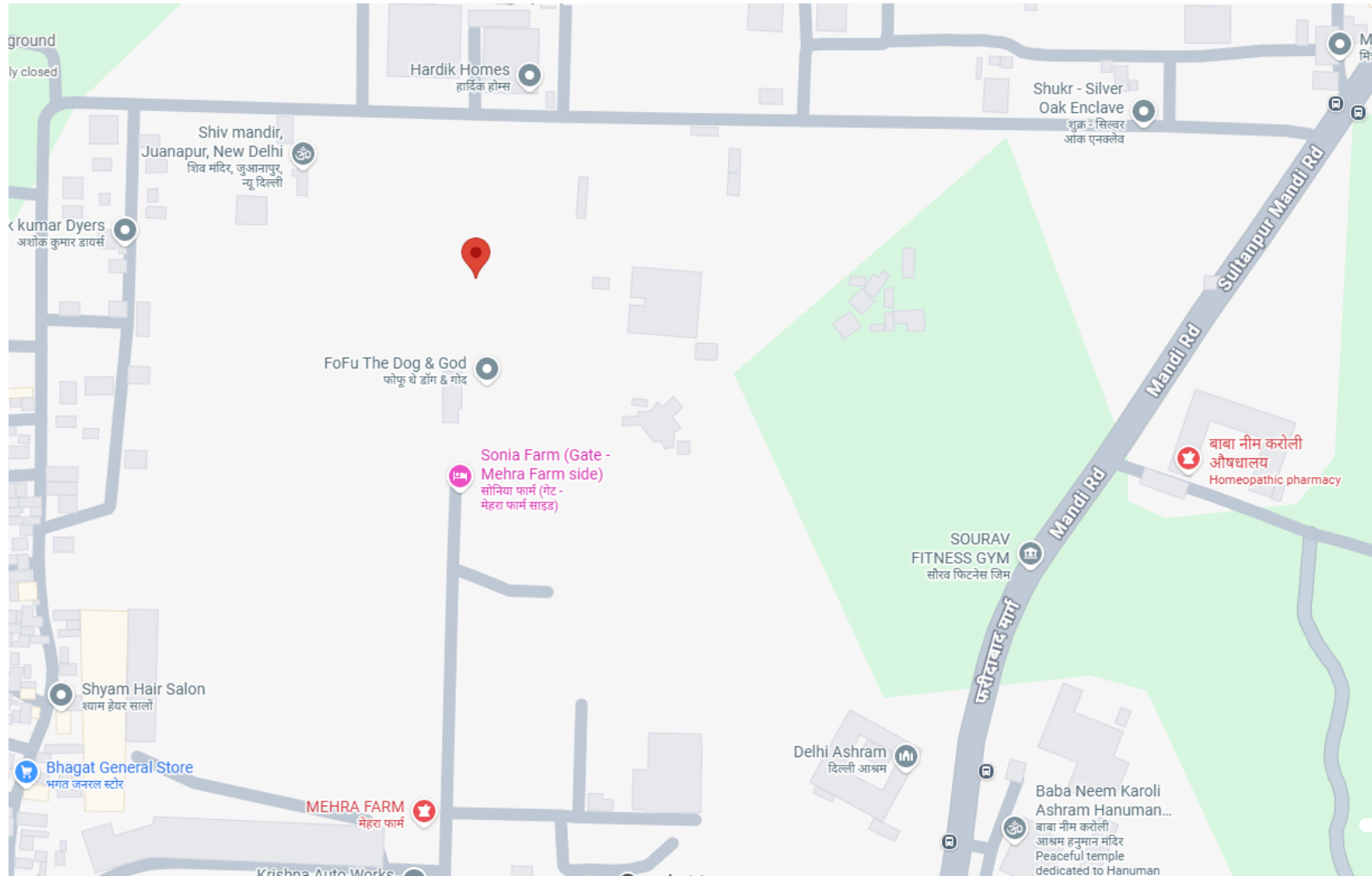


PANSY RESIDENCY



Contact Us: 9899550700
www.bhavishyanirman.com

LOCATION MAP



1. SCHOOL

- Pathways School
- Heritage School
- Orchid International School
- JR Public School

2. MALLS

- Central Plaza Mall
- South Point Mall

3. HOSPITAL

- Paras Hospital
- Fortis Hospital
- Max Hospital



Terrace Garden



Branded Door Lock



Modular Kitchen



Jaquar Fittings



Wardrobes



Fire safety



Video Door Phone

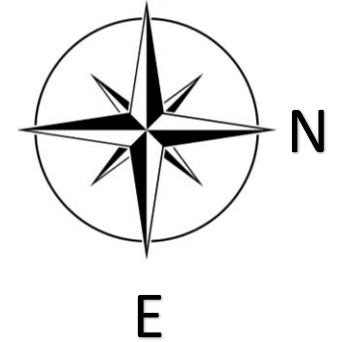
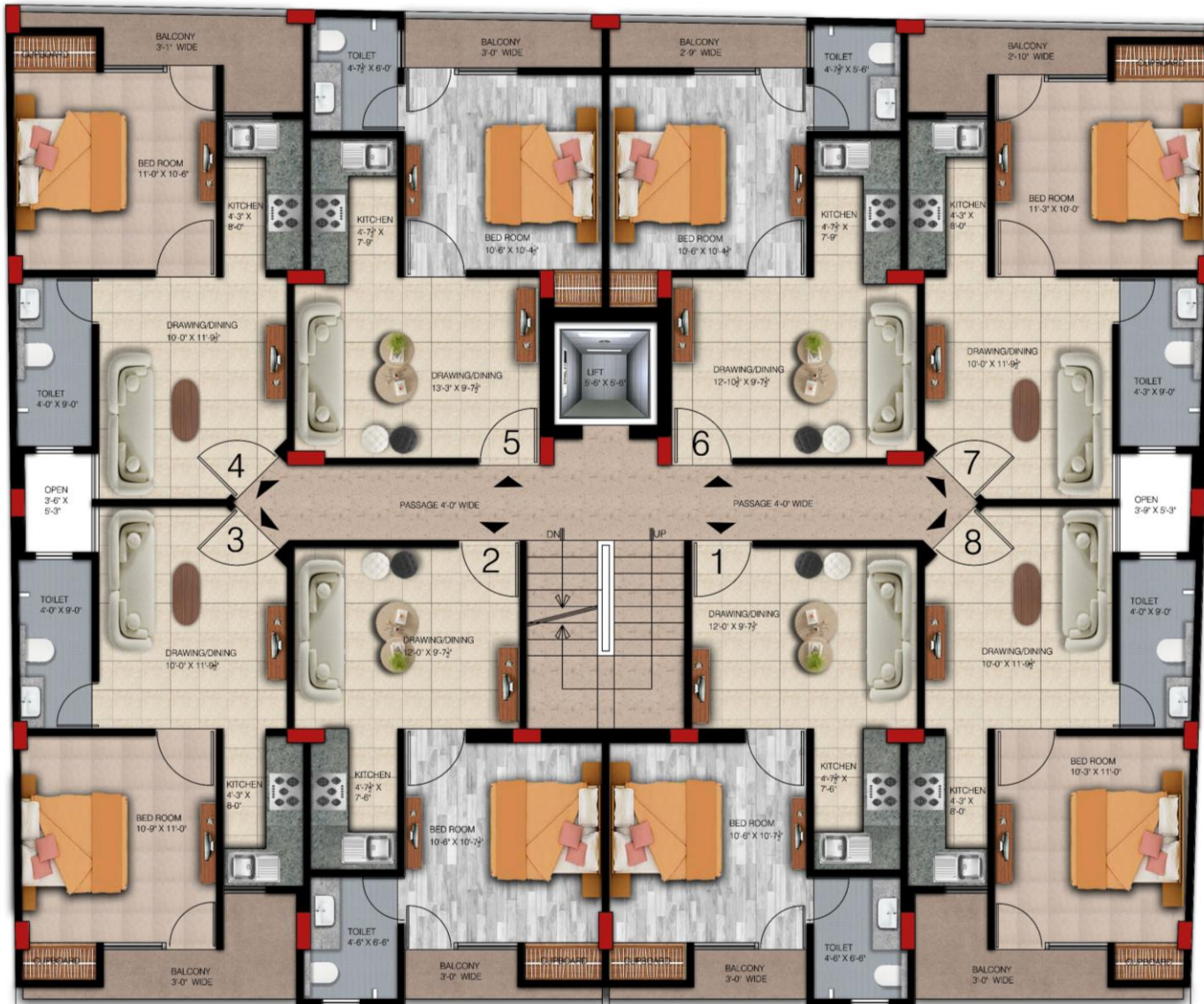


Branded Lift



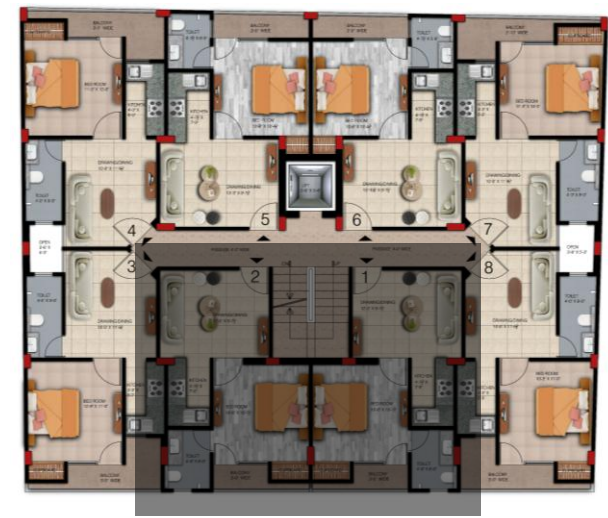
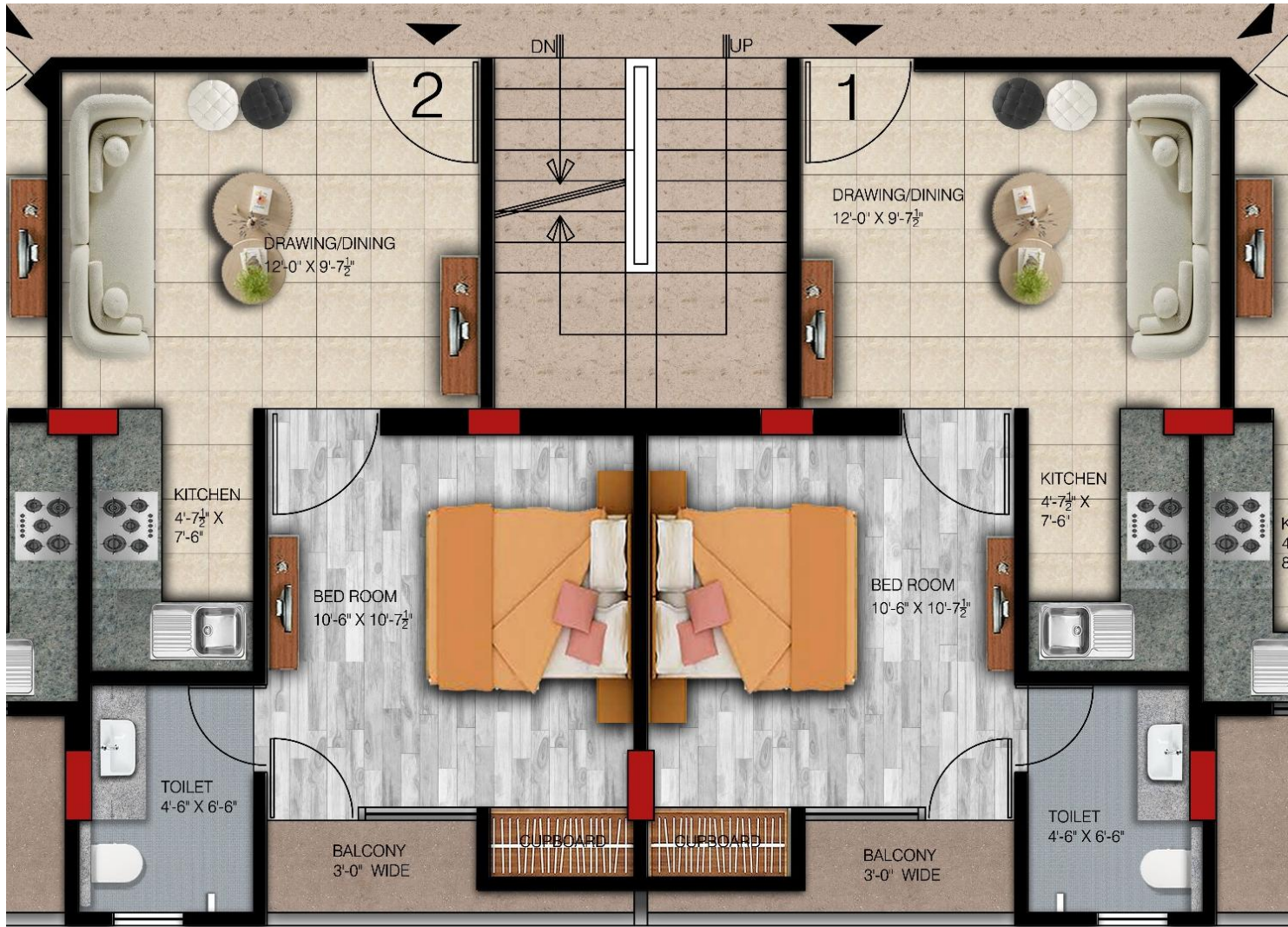
Gated Community

AMENITIES

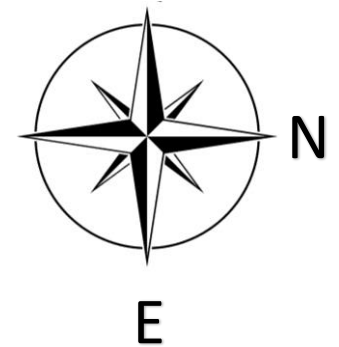


← EAST FACE ROAD →

SITE PLAN



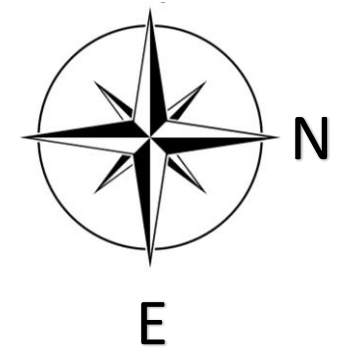
ONE BHK FLATS



UNIT-1 & UNIT-2



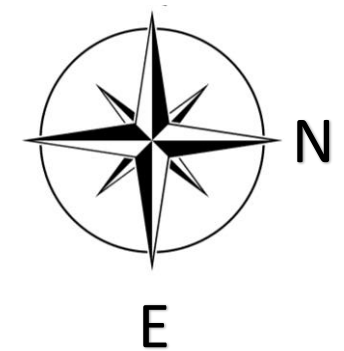
ONE BHK FLAT



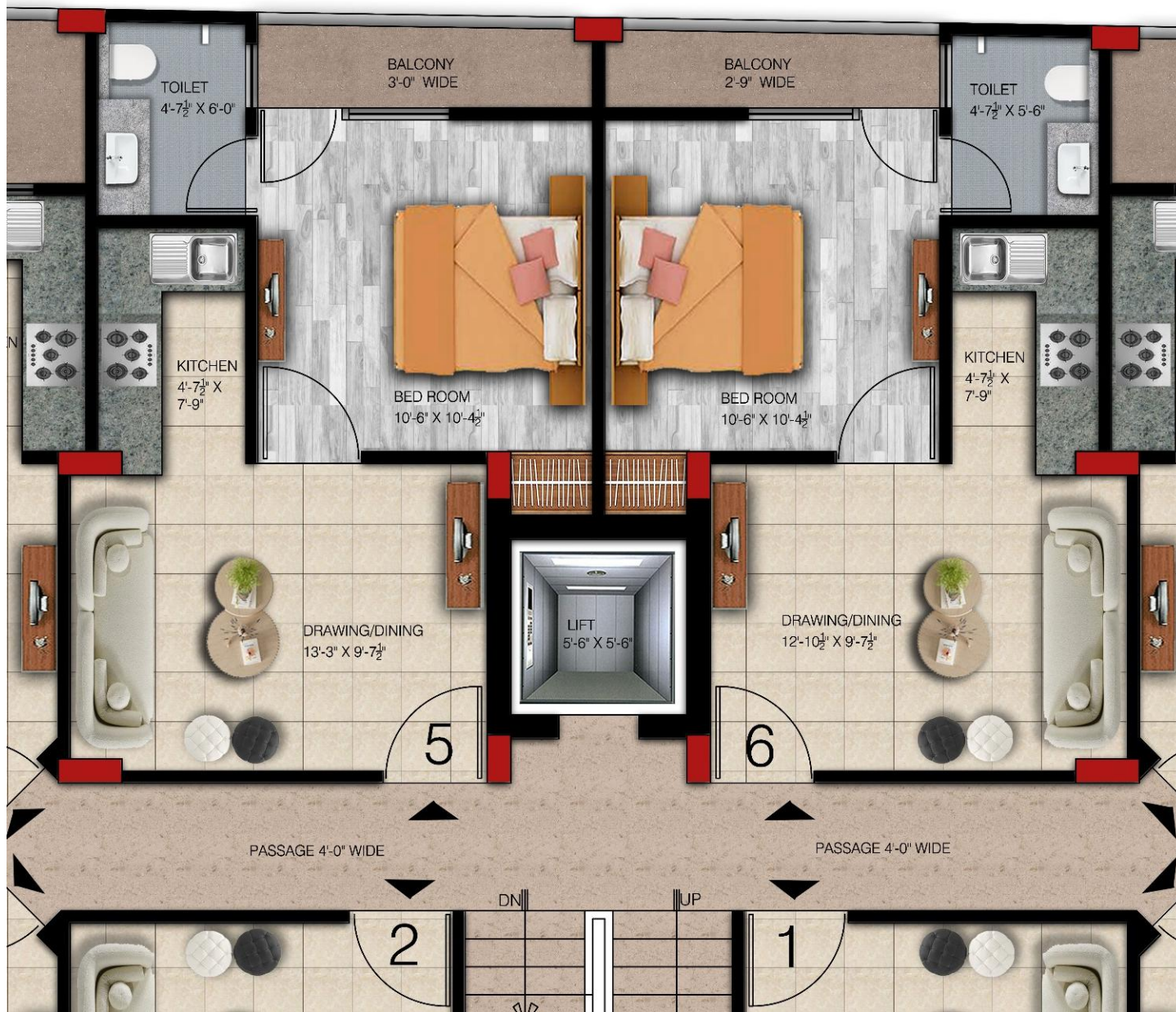
UNIT-3



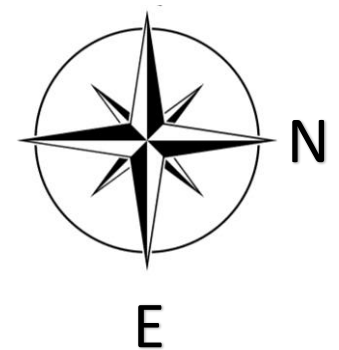
ONE BHK FLAT



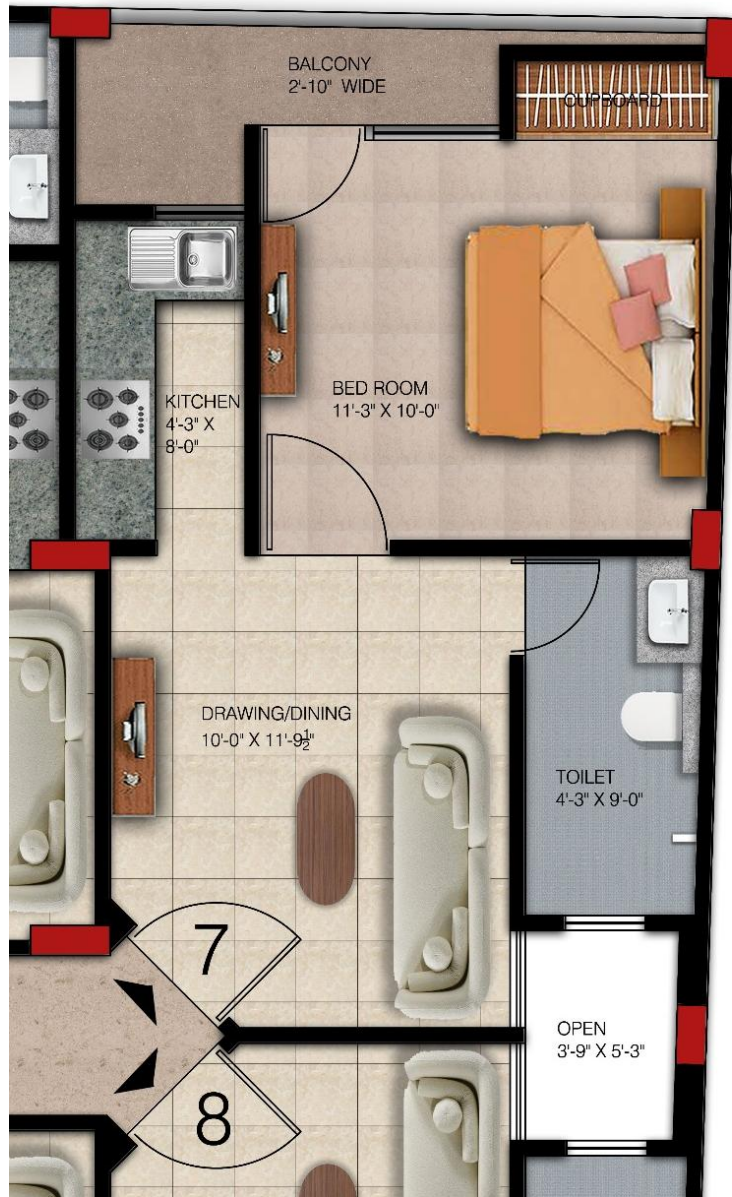
UNIT-4



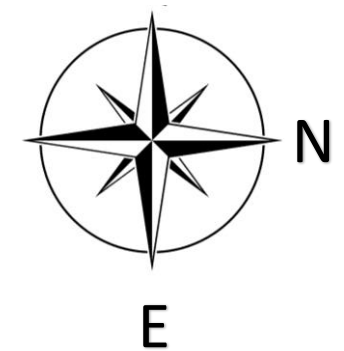
ONE BHK FLAT



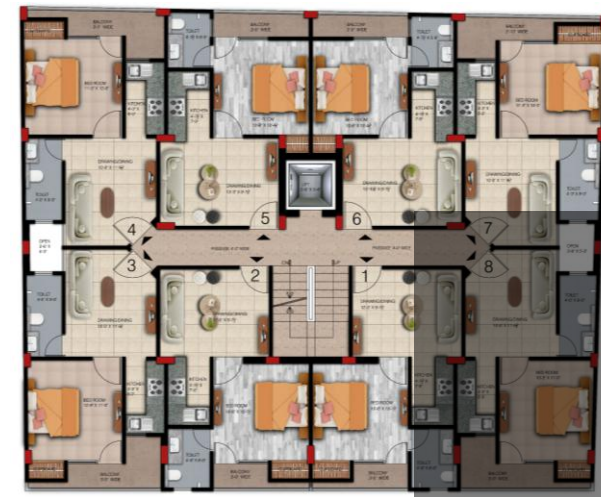
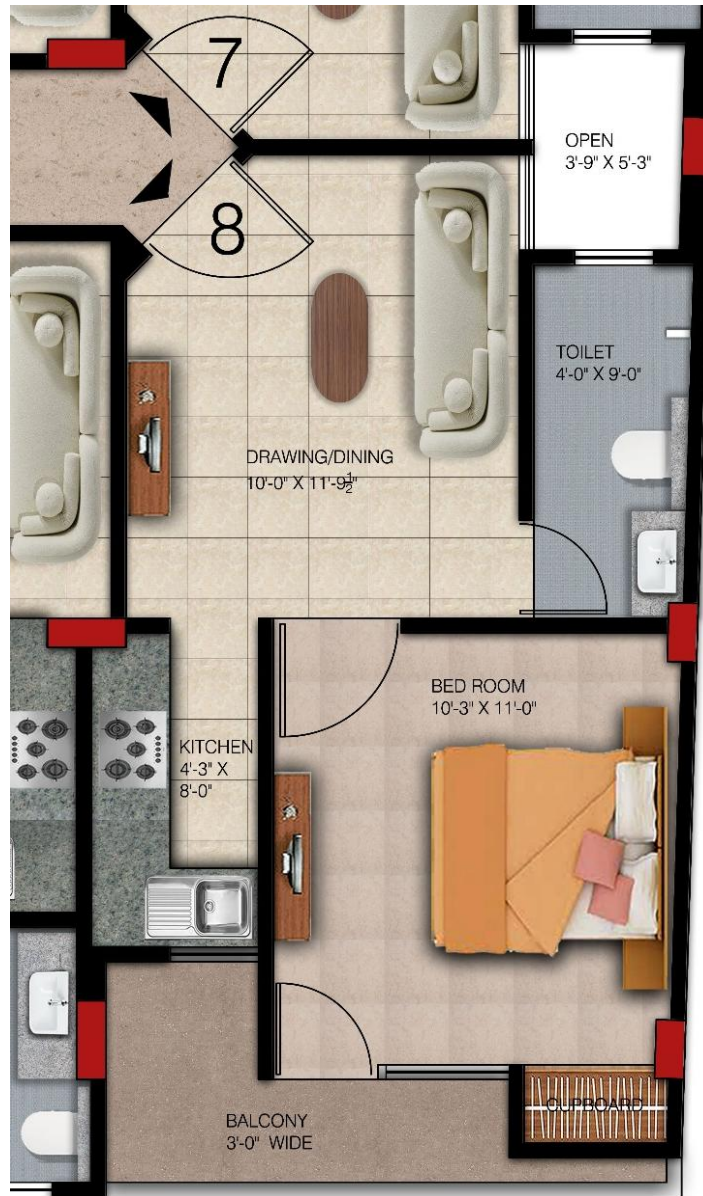
UNIT-5 & UNIT-6



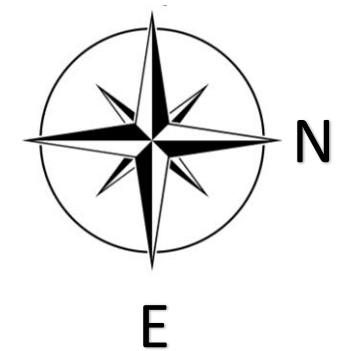
ONE BHK FLAT



UNIT-7



ONE BHK FLAT



UNIT-8



GALLERY



GALLERY



GALLERY



GALLERY

ANNEXURE

1. DRAWING ROOM

- False ceiling with roof light
- Floor Tiles 64"x32" or 24"x48"
- Fan – Orient/Bajaj/Havells
- Switches – Anchor/Havells Reo

2. KITCHEN

- Tiles 16"x16" / 4'x2'
- False Ceiling with roof lights
- Modular kitchen with chimney
- Exhaust – V-Guard/Havells/Usha

3. ROOMS

- False Ceiling with roof lights
- Tiles 16"x16" / 4'x2'
- Fan – Orient/Bajaj/Havells
- Switches – Anchor/Havells Reo

4. TOILETS

- Gypsum Ceiling
- 15 Lit Geyser –
Bajaj/Crompton/Usha
- Fittings – Kohlar/Jaquar
- Exhaust – V-Guard/Havells/Usha

5. PAINTINGS

- Acrylic putty with OBD / POP
Design as per architects
- Texture
- Plastic paint Asian / Nerolac
Premium

ANNEXURE

6. BALCONY

- Tiles 16"x16" / 4'x2'
- As per the Architects design

7. STAIRCASE

- As per the Architects design

8. LIFT

- Johnson / Kone / Schindler Branded Lift

9. GENERAL

- Anti Termite Treatment
- Underground Water tank with pumps
- Dedicated 1000L water for every flat
- Stilt parking

10. PARKING

- Tiles 64"x32" / 4'x2'
- Dual Colour Granite Parking

11. SECURITY

- Video Doorbell
- Smart Lock
- CCTV Camera (In common space)
- Fire Safety

About Us

Over 18+ years, we are specialized in building your Bhavishya Nirman and we trust that interest is always better than perfection.

Through our exemplary efficiency and commitment to project delivery, we strive to etch ourselves into the annals of residential architecture in India. Reshaping the landscapes of both affordable and luxury housing with our high-quality construction methods. Deals in Luxury Housing Amenities in Affordable Price . we execute the art of laying successful foundations, both for glorious businesses as well as evergreen structures. We are powered by an ever-innovating team of professionals with an endeavor to fulfill expectations of our associates, partners and most importantly, customers. Positioned in the lavish neighborhoods of South Delhi (Chhatarpur, Mandi, Gadaipur ,Ghitorni & Gurugram. The prime location makes connectivity and living effortless. Bhavishya Nirman is dedicated to upgrading your lifestyle and providing you with a home that you will fall in love with. The residencies are well furnished with top-notch amenities



9899550700

9711626242, 892020990



info@bhavishyanirman.com



www.instagram.com/bhavishyanirman_official



www.facebook.com/Bhavishya.Nirman12

Contact Us

OFFICE ADDRESS

Office No. 1, 4th floor , khasra no. 393/1, Near Ghitorni Metro Station , main market ,
Ghitorni , New delhi ,110030

DELIVERED PROJECTS

- Lotus Apartment
- Daisy Apartments
- Jasmine Apartments
- Magnolia Apartments
- Lily Green
- Orchid Green

BHAVISHYA NIRMAN DEVELOPERS

www.bhavishyanirman.com